



Islington
Clinical Commissioning Group

Overview and Scrutiny Committee

Tuesday 19 May 2015



Who we are and what we do

We are Islington Clinical Commissioning Group (CCG)

We plan, buy and monitor local health services including planned and urgent hospital care, community health services, mental health and rehabilitation

We are made up of 36 local GP practices, working in partnership with local providers and Islington Council

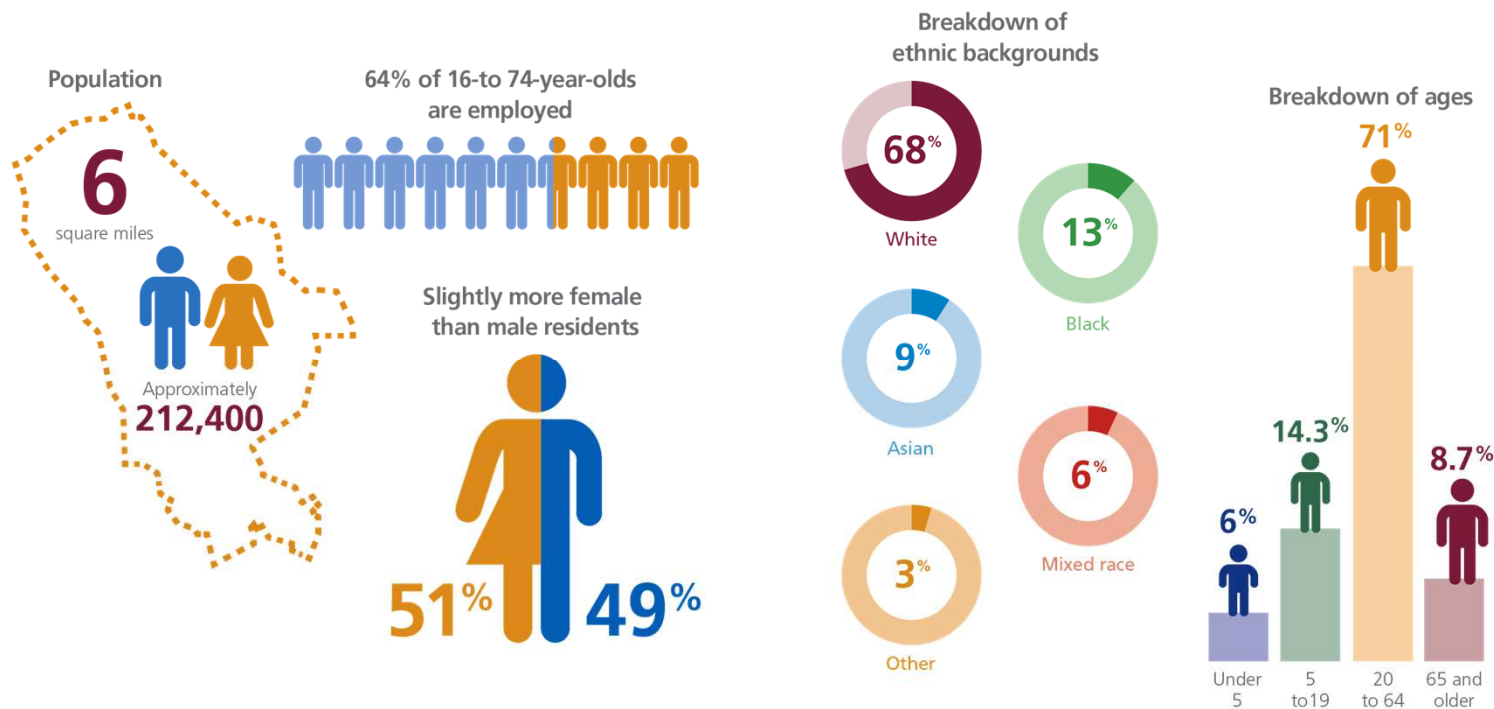


We are an 'integrated care pioneer', meaning that we and Islington Council work together to link services in health and social care

Our communities

Islington's challenges:

- most densely populated UK borough and the 4th most deprived in London
- second highest level of child poverty in the country
- highest level of psychosis in England
- high level of long-term conditions that will need a different kind of care over 10 years



Our health and wellbeing priorities

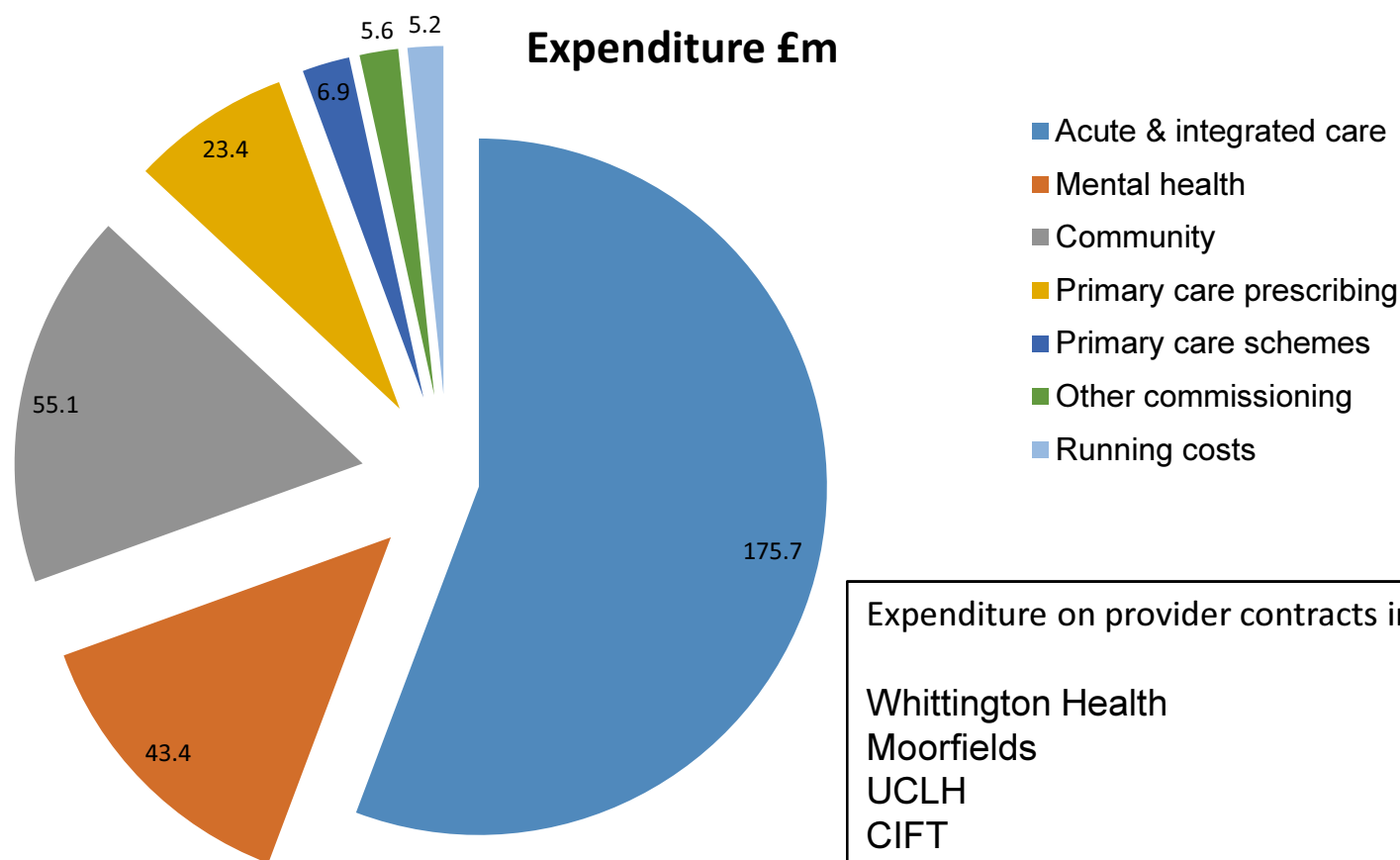
Islington (both the Council and the CCG) share these priorities for our local population

- To make sure every child has the best start in life
- To prevent and manage long term conditions and reduce health inequalities
- To improve mental health and wellbeing
- Delivering high quality, efficient services within the resources available



What we spent in 2014/15

We spent a total of £315.3m across commissioning areas and management costs:



Expenditure on provider contracts includes:

Whittington Health	£93.6m
Moorfields	£ 3.8m
UCLH	£60.3m
CIFT	£35.9m
Royal Free Hospital	£10.3m
Barts Health	£ 4.9m

Some of our achievements

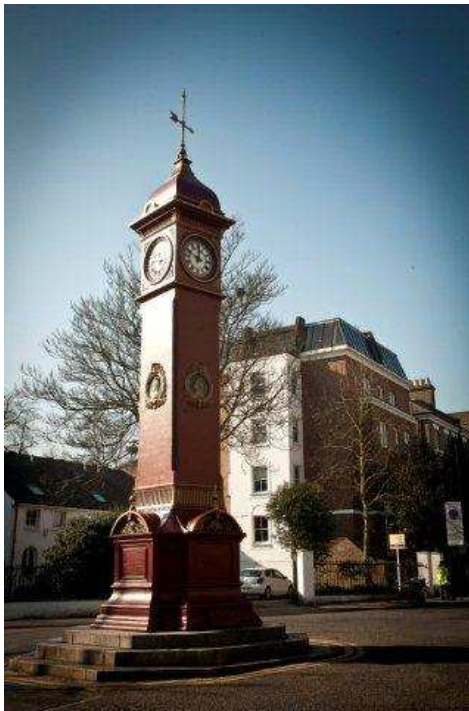
- Reversal of the historically low trend in vaccination of children – Islington now performing amongst the best in the country for 5-in-1 vaccinations
- Launched The Story of Maggie and Rose to show how integrated care works in a joined up way to help those with complex health needs
- Local GP met face to face with over 200 local residents to hear their views about NHS 111 and Out of Hours care
- Improved diabetes services through partnership working with local patients



- Supported those with mental ill health back into employment through the Reablement Service
- Commissioned Whittington Health's Ambulatory care centre at Whittington Health to address pressure on A&E
- Ran a Choose Well campaign across Islington, with focus on self-care
- Dementia navigators helping people to get help with housing, writing wills, and many other services

Our plans for 2015 / 16

- Engaging with our local population about their views on Islington's health priorities, and providing good information about appropriate access to care, including using self-care
- Continued focus on integrating care, and our shared priorities with Islington Council - children's health, long term conditions, mental health and wellbeing, whilst continuing to carefully steward our resources



- Developing Islington's health and social care workforce through our Community Education Provider Network
- Building Islington's clinical leadership, using local GP insight to drive commissioning in partnership with patients and service users
- Joint working across north central London focusing on improving primary care, and shifting our focus toward commissioning for healthy outcomes

In the next five years



We will:

- focus on prevention
- work with people to design new services
- improve access and quality in primary care
- make GP practices the centre of co-ordinated health and social care
- manage care better by planning ahead and having a single point of contact
- help people to manage their own care

Find out more about us

 @islingtonccg

islington.ccg@nhs.net

www.islingtonccg.nhs.uk